

# Infrared Heating test

## Object:

Using an infrared camera we wanted to detect the thermal impression of the new Hathor series infrared heaters.

## Test procedure:

The test had been carried out by aiming the luminaires on a horizontal wall in black wood. The measurements were made from different distances, always positioning the heating appliances on the front of the wall. In order to continuously measure the temperature of the entire heated surface, digital images were acquired at regular intervals in the infrared field by means of a digital camera positioned at a fixed point. Thanks to the symmetry of the irradiation, half of the heated surface could be detected.



Preliminary record

Tested items:



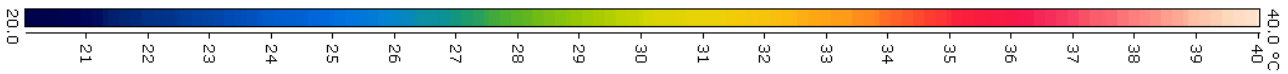
List of items tested :

Item	Model	Note
791	Hator 2000 W	Constant Voltage
792	Hator 4000 W	Constant voltage
793	Hator 6000 W	Power supply not controlled

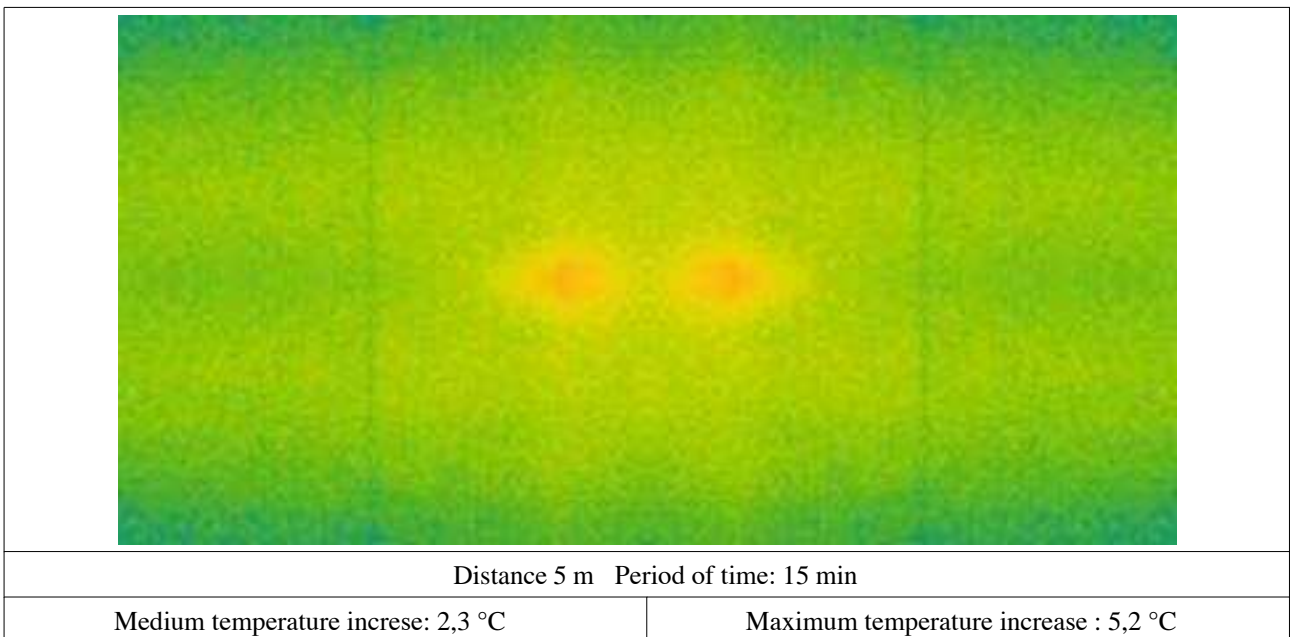
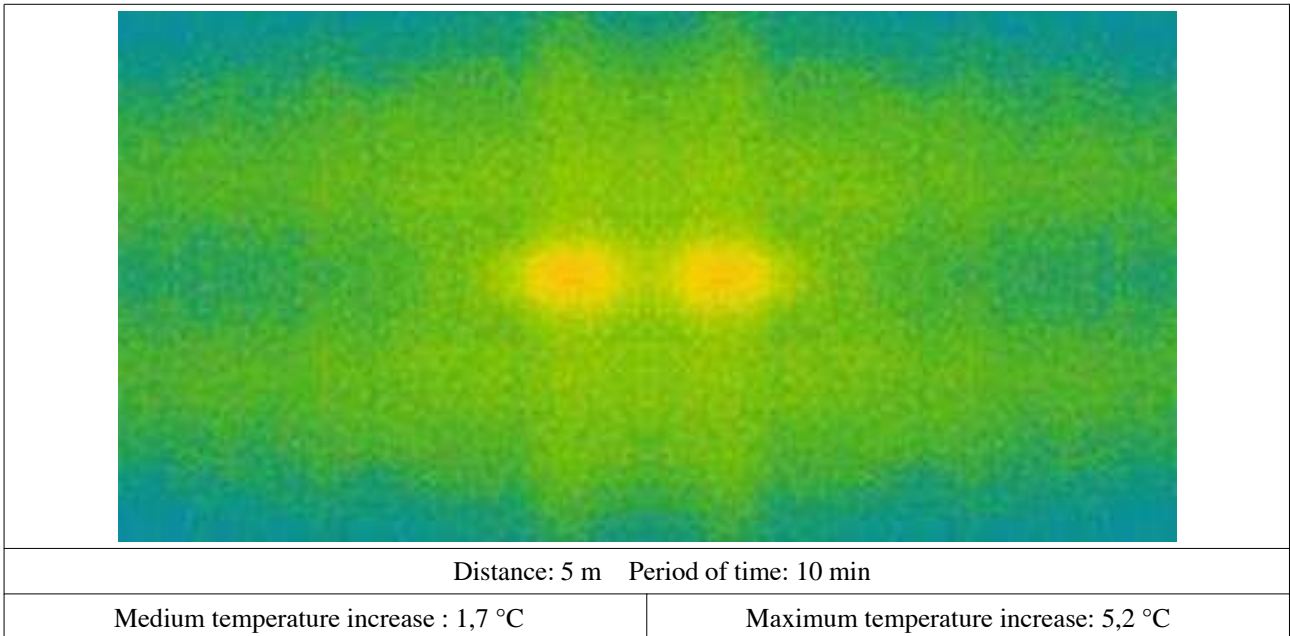
RECORDS :

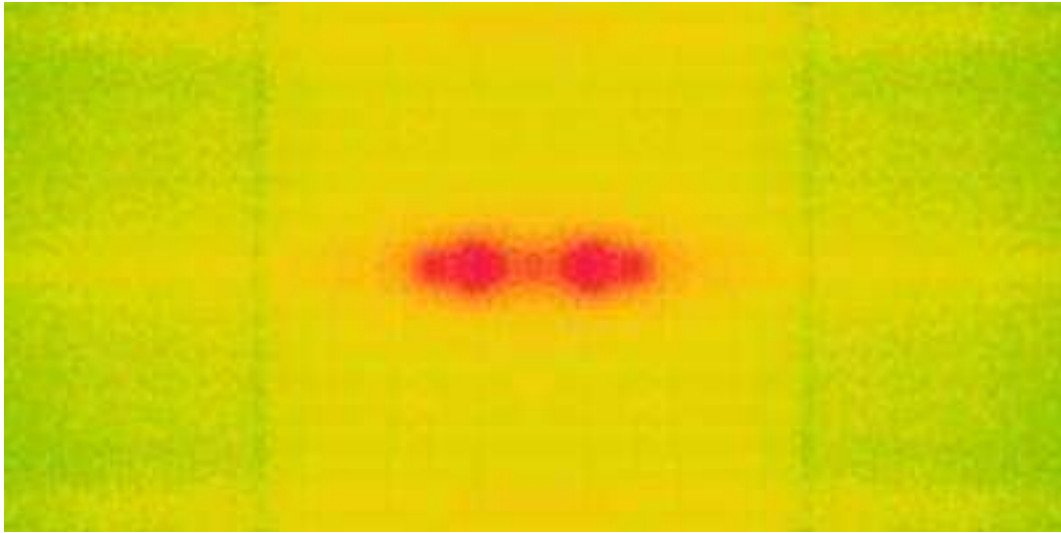
Dimensions of the heated area: 4 x 2 m.

Temperatures match this scale:



1 ) Hator 2000 W





Distance 4 m Period of time 10 min

Medium temperature increase: 1,6 °C

Maximum temperature increase: 7,0 °C



Distance 4 m Period of time: 15 min

Medium temperature increase : 2,4 °C

Maximum temperature increase : 8,0 °C



Distance 3 m Period of time: 10 min

Medium temperature increase: 3,7 °C

Maximum temperature increase : 13,3 °C

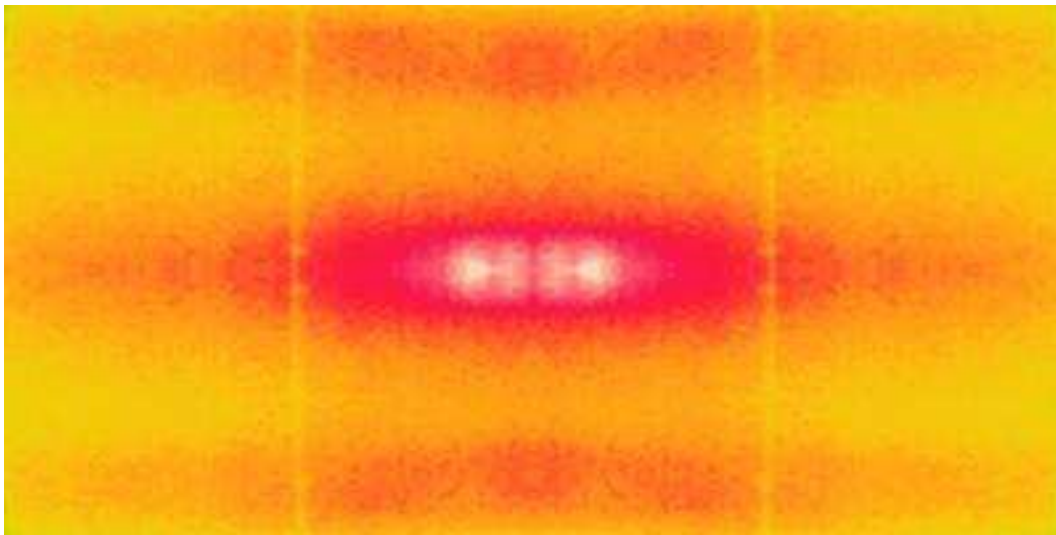


Distance 3 metri Period of time 15 minuti

Medium temperature increase : 4,4 °C

Maximum temperature increase : 15,3 °C

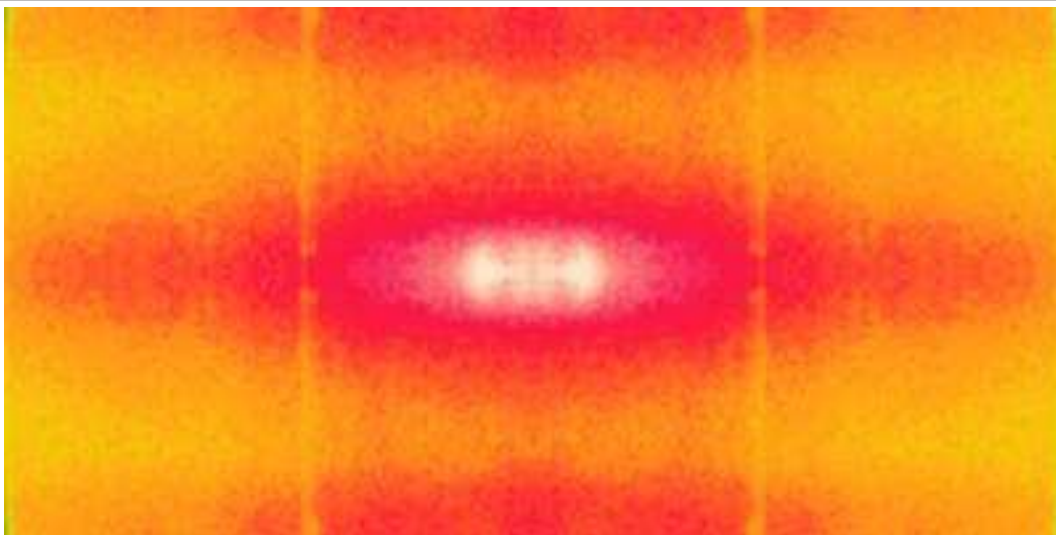
2 ) Hator 4000 W



Distance 5 metri    Period of time 10 minuti

Medium temperature increase : 3,6 °C

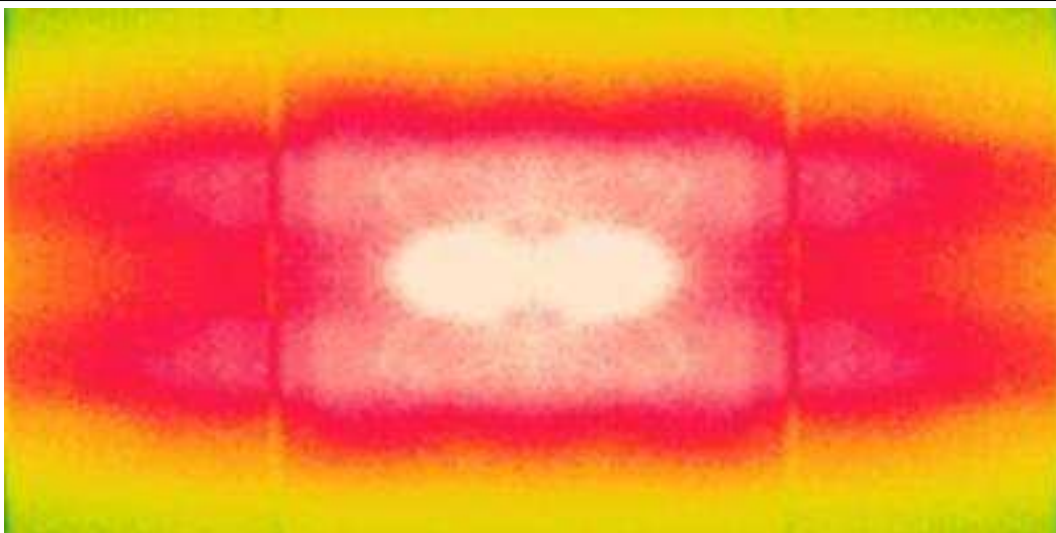
Maximum temperature increase : 9,9 °C



Distance 5 metri    Period of time 15 minuti

Medium temperature increase : 4,4 °C

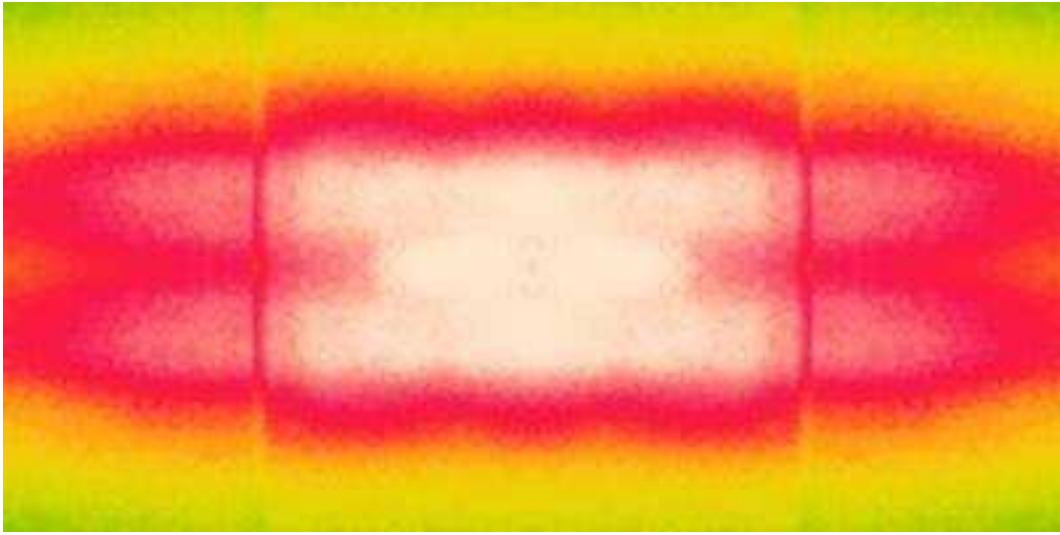
Maximum temperature increase : 10,9 °C



Distance 4 metri    Period of time 10 minuti

Medium temperature increase : 5,2 °C

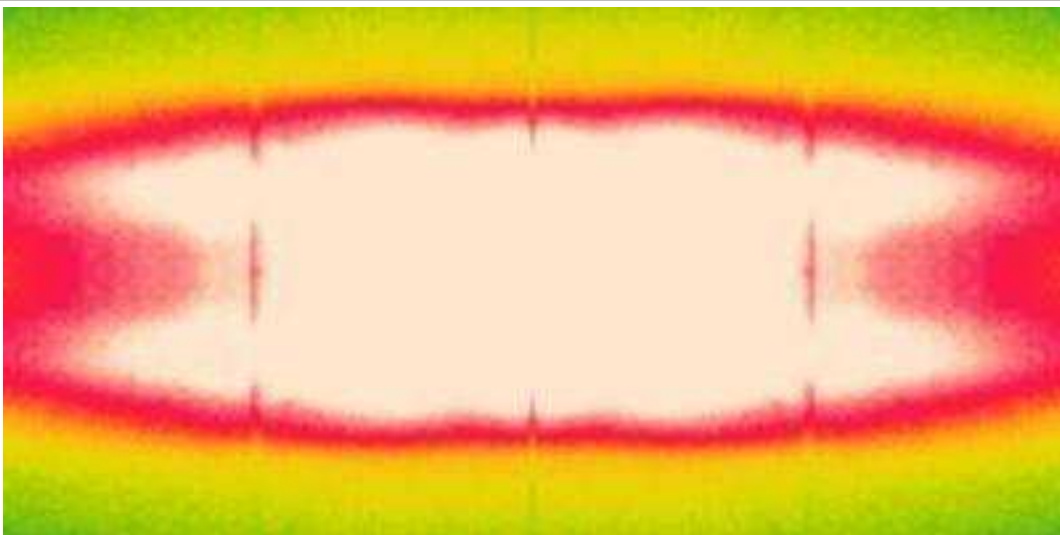
Maximum temperature increase : 15,9 °C



Distance 4 metri    Period of time 15 minuti

Medium temperature increase : 6,0 °C

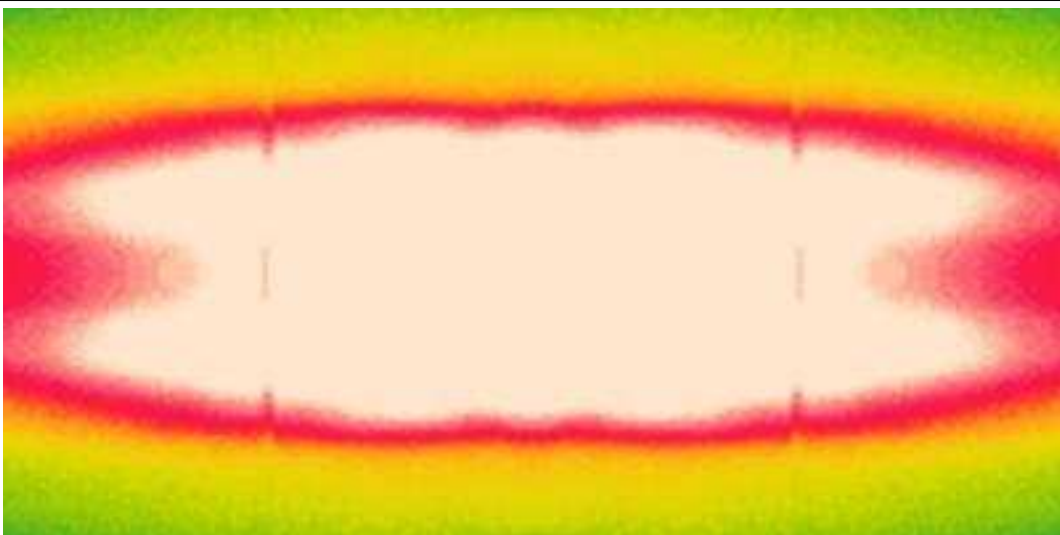
Maximum temperature increase : 17,2 °C



Distance 3 metri    Period of time 10 minuti

Medium temperature increase : 7,0 °C

Maximum temperature increase : 25,4 °C

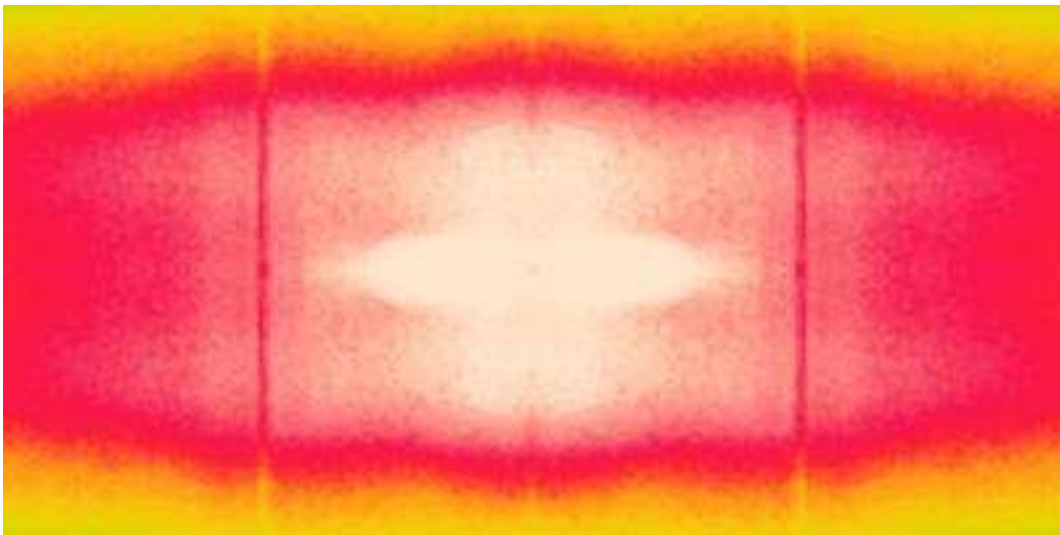


Distance 3 metri    Period of time 15 minuti

Medium temperature increase : 7,7 °C

Maximum temperature increase : 26,6 °C

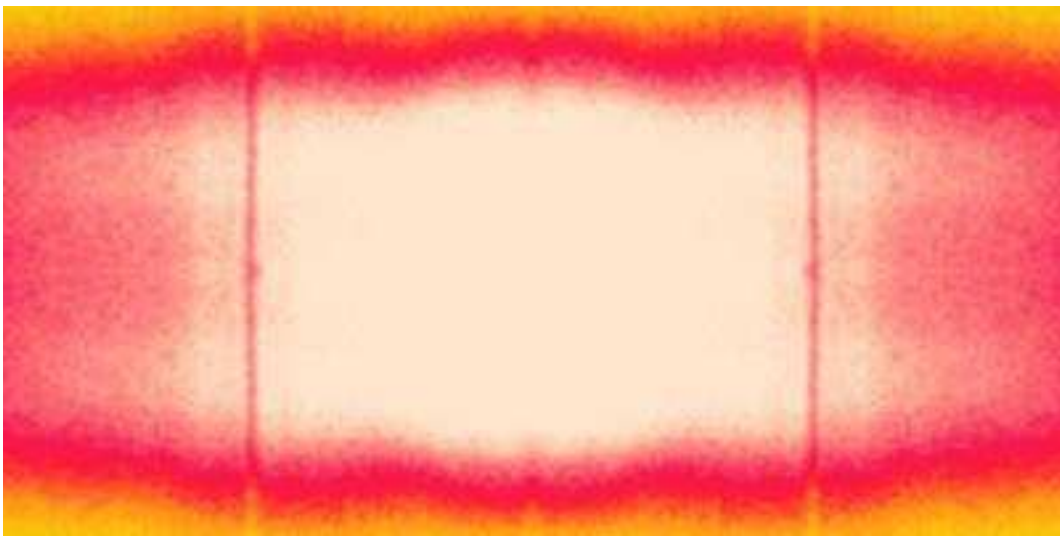
### 3 ) Hator 6000 W



Distance 5 metri    Period of time 10 minuti

Medium temperature increase : 6,7 °C

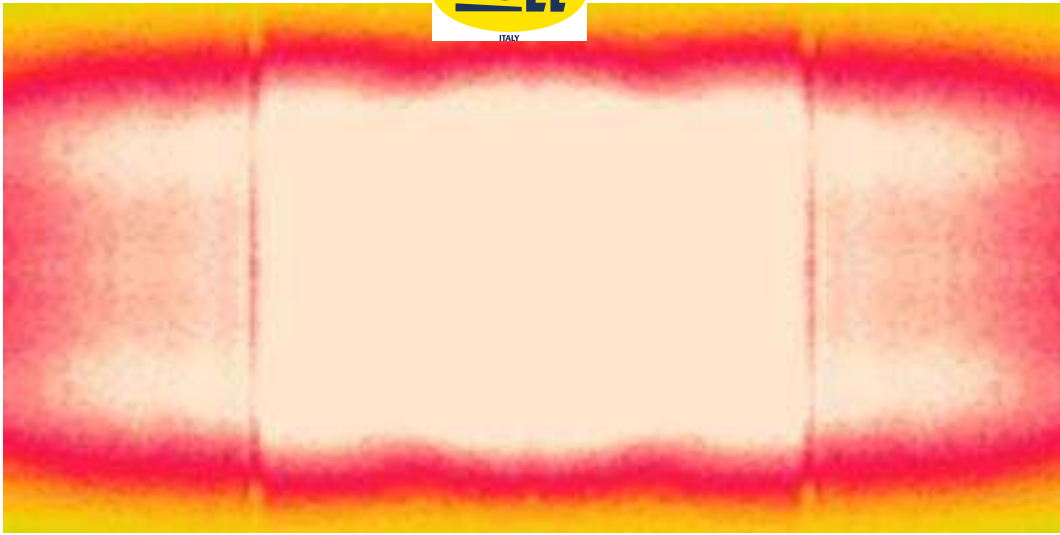
Maximum temperature increase : 17,4 °C



Distance 5 metri    Period of time 15 minuti

Medium temperature increase : 7,1 °C

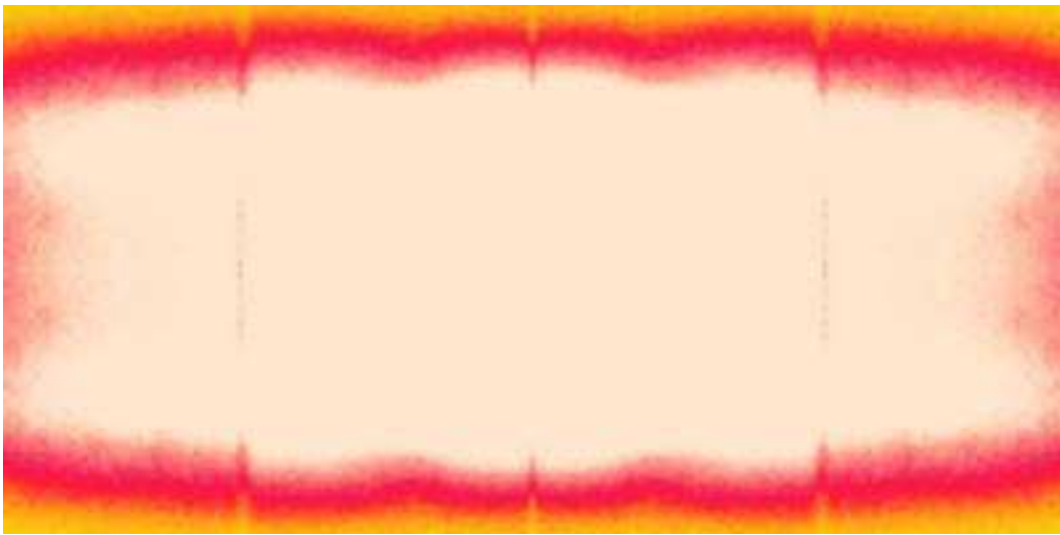
Maximum temperature increase : 18,1 °C



Distance 4 metri    Period of time 10 minuti

Medium temperature increase : 7,1 °C

Maximum temperature increase : 23,1 °C



Distance 4 metri    Period of time 15 minuti

Medium temperature increase : 8,0 °C

Maximum temperature increase : 24,2 °C